

**Technical specification:**

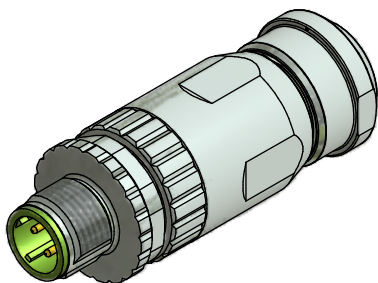
Rated voltage: IEC 61076-2-101	250 V
Current rating: IEC 61076-2-101	4 A at 40°C
Insulation resistance: IEC 60512	>=100 MΩ
Pollution degree: IEC 60664-1	3/2
Degree of protection: IEC 60529	IP 67, in mated condition
Temperature range: IEC 60664-1	-30°C ... +85°C
Mating cycles: IEC 60512-9a	>=100
Wire cross section:	AWG18 / max. 0,75 mm²

**Materials:**

Contact:	CuZn
Contact plating:	Nickel, gold plated
Contact carrier:	PA6, UL 94
Screw connection	CuZn / nickel tin plated
Cable seal:	Elastomere
O-Ring:	NBR
Coupling screw:	GD-Zn, nickel plated
Housing:	GD-Zn, nickel plated

**Installation specification:**

Recommended torque:	0,6 Nm
Conec installation tooling:	Torque wrench: 36-000200 Insert across flats 18: 36-000240

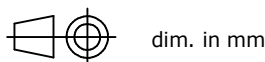


Part no:	Description:	Pos:	Cable-Ø:
43-00161	SAL - 12D - RSC4 - S / 075 / A1012	4	4 - 8 mm

DO NOT ALTER CAD DRAWING BY HAND  
Directive 2002/95/EC RoHS compliant

Index: a 01.02.11 dbu Ä3769  
Coupling screw modified, spanner flats added, data sheet modified

THIS DRAWING MAY NOT BE COPIED OR REPRODUCED IN ANY WAY, AND MAY NOT BE PASSED ON TO A THIRD PARTY WITHOUT WRITTEN PERMISSION.  
OWNERSHIP AND COPYRIGHT OF CONEC GmbH



	date	name
drawn	26.04.10	Burschik
appd.	26.04.10	Schmidt



title:  
**Male connector M12x1,  
field attachable, shielded, axial,  
screw connection**

dwg no:  
**43K1A1112**

part no:  
**see table**